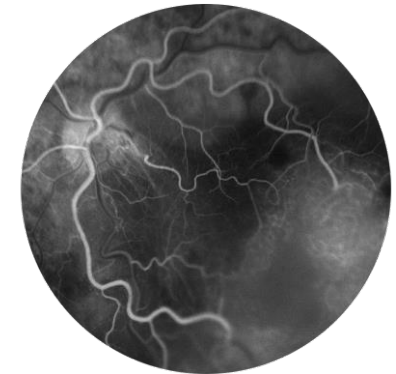
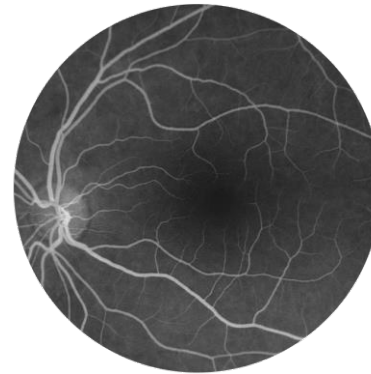
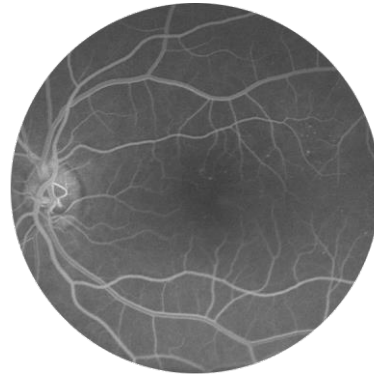
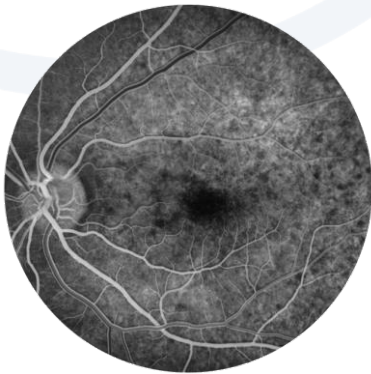


# FLUORESCEIN ANGIOGRAPHY IMAGING

Examining the circulation of the retina and choroid



Smartscope FA is intended to be used in hospital environment and may only be operated by qualified and trained medical personnel.

# Preparations



**Dilate  
patient's eyes**



**Take a regular fundus image  
with EY4 before fluorescein**

Use manual focus and the diopter setting that is right for the patient. Before imaging enable **Capture settings in image** in EY menu. This information can be utilize when imaging with FA.



**Review the image**

Review image to see that focus is correct and that image is otherwise clear.

# Switch EY4 to FA



**Remove EY4  
module**



**Attach FA  
module**



**Attach camera to  
slit lamp**

# FA settings

Use following settings  
for FA procedure:

Enable center  
target led



Apply same manual  
focus settings as  
with EY4

Start with brightness  
7 and go higher if  
needed

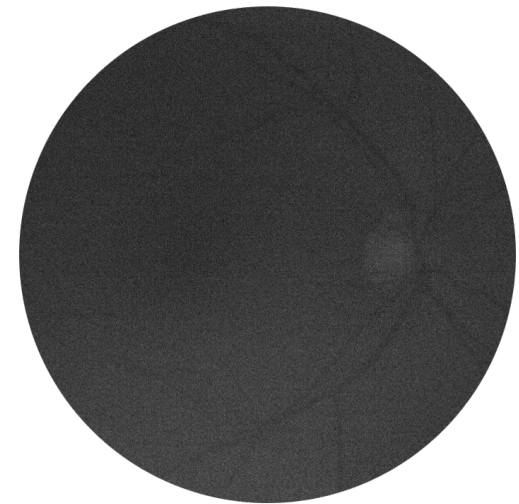
## Final check



**Check that IR view  
to the eye is good**



**Take one reference  
image before sodium is  
injected by the doctor**



If everything is correct a faint image of the retina (like the one above) should be seen, but no big reflections or dark areas.

The time counter starts running after the above "dummy" image, so the study should be stopped (from the camera FA menu).

# Start study



## **Injection**

- Study requires fluorescein injection.
- This procedure is intended to be **done in hospital environment and may only be operated by qualified and trained medical personnel.**

## **Start study**

by taking first image with FA attached.  
Ask the doctor about desired imaging sequence.

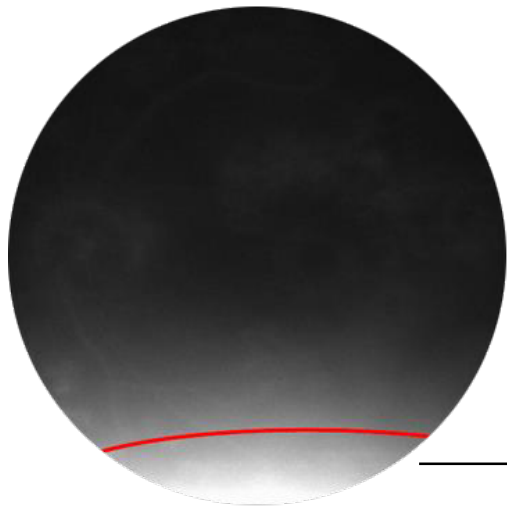
Instant review should be set off from FA menu, if images are taken in fast pace.

# Time counter

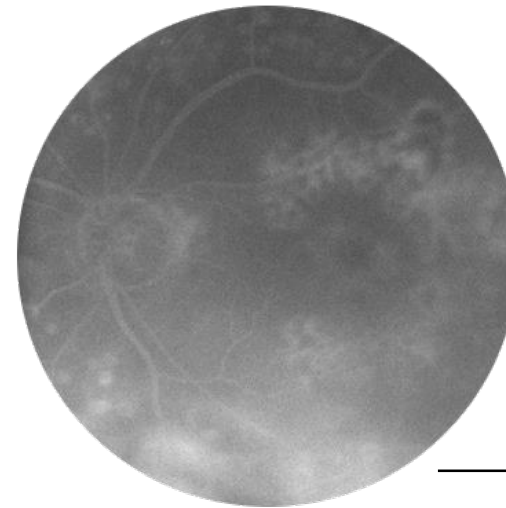
- Time counter will guide you through out all the phases of Angiography.
- The capture time is marked to captured images, but reader can also see it on the images on slides.
- To stop the time counter after finishing the study, user needs to switch to FA optics menu and press the STOP STUDY button.



# Trouble shooting



Bright reflection on the bottom of the image  
☒ Camera is slightly too far from patient



Whole image is bright, but some small haze is still in the bottom of the image  
→ camera should be moved slightly up

At 8s fluorescein not yet fully in circulation = low contrast

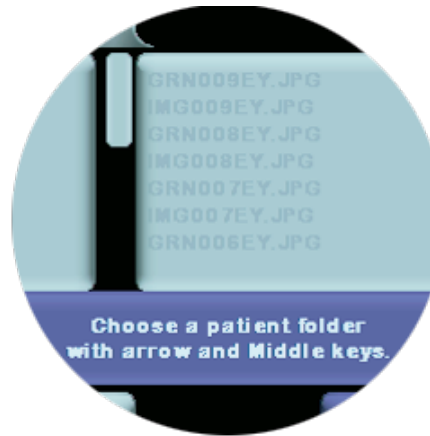
- Reflection on bottom of image ☒ Camera is too far away
- Reflection on top of image ☒ Camera is too close
- The images are partly or totally dark ☒ Patients eye or head has moved. Back up with camera and reapproach

## After imaging

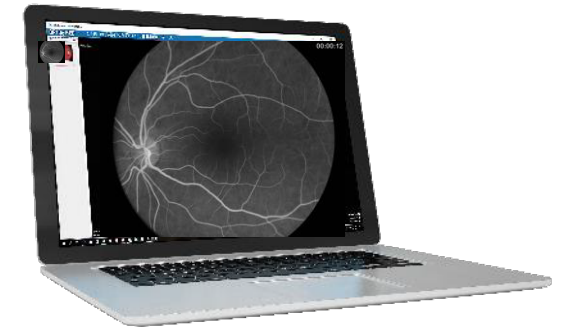


### Taken image is displayed on the screen...

...until user clears the image by pressing shutter or left/ right soft key.



### Images can also be previewed in device menu.



### When you finish imaging, store images on a computer.

Images are uploaded to computer through Wi-fi or by placing the camera in the cradle.